

RoHS

This products can apply to the SESO Doc NO. QA-3-04-005 of Environmental&Material Management Rules

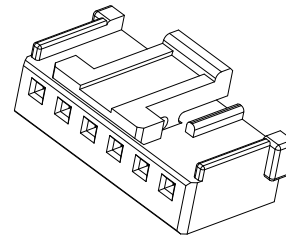
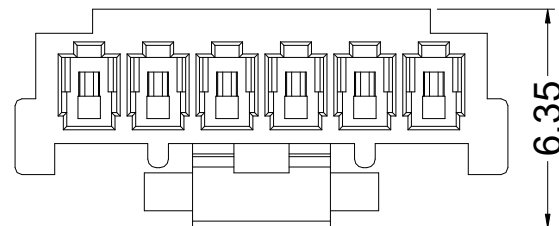
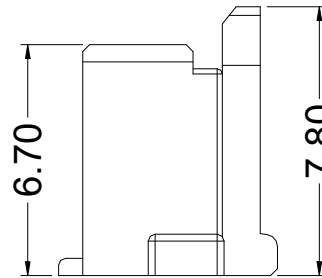
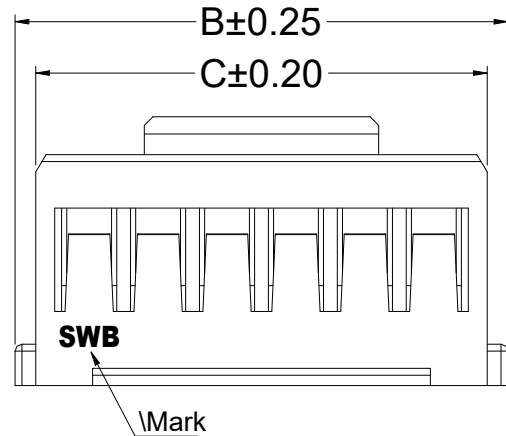
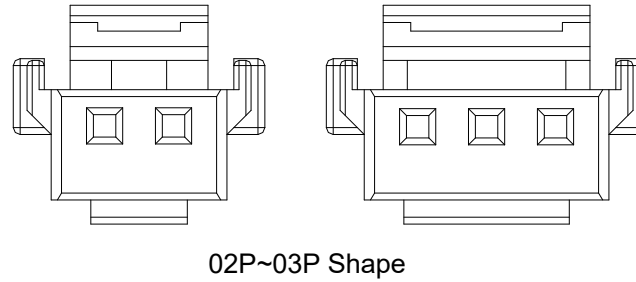
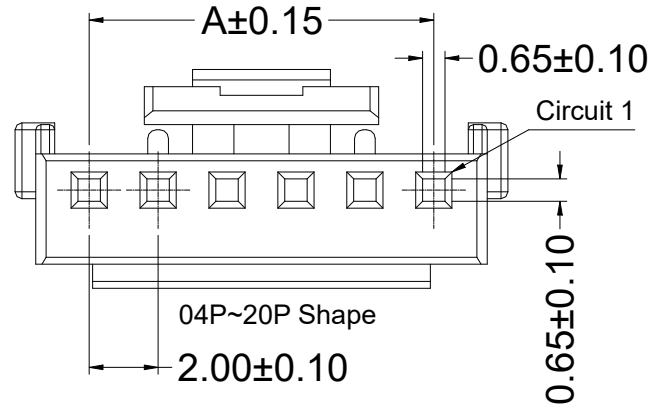
■ Specifications :

- Voltage rating: 125V AC / DC
- Current rating: 2A AC / DC
- Withstanding voltage: 1000V AC/minute
- Temperature range: -40°C~+105°C
- Insulation resistance: ≥1000MΩ
- Contact resistance: ≤20mΩ
- After environmental testing: ≤30mΩ
- Suitable SWB Terminal: 3535T / 3535TH
- Suitable SWB Wafer: 3535WV / 3535WR

3535 H X - XX X - N0 XX
 ① ②③ ④⑤ ⑥ ⑦

- ① Series No.
- ② Category: H-HSG
- ③ Appearance type: Blank-Ordinary
- ④ Row No.-Pin No.: XX-02P~20P
- ⑤ Plug the Pin & Special No.: Blank-Ordinary
- ⑥ Material : N0-PA66 UL 94V-0
- ⑦ Color : Blank-Natural Color

Poles	Dimensions (mm)			Poles	Dimensions (mm)		
	A	B	C		A	B	C
02	2.00	7.30	5.10	12	22.00	26.30	25.10
03	4.00	9.30	7.10	13	24.00	28.30	27.10
04	6.00	10.30	9.10	14	26.00	30.30	29.10
05	8.00	12.30	11.10	15	28.00	32.30	31.10
06	10.00	14.30	13.10	16	30.00	34.30	33.10
07	12.00	16.30	15.10	17	32.00	36.30	35.10
08	14.00	18.30	17.10	18	34.00	38.30	37.10
09	16.00	20.30	19.10	19	36.00	40.30	39.10
10	18.00	22.30	21.10	20	38.00	42.30	41.10
11	20.00	24.30	23.10				



DATE	REV	ECN NO.	DESCRIPTION	MODIFY	APPROVAL
2022.9.26	J1	/	ADD "Circuit 1" Identification	Jane	Larry
2020.4.01	J	EN20180125001	Update Drawing Frame, The Same ECR And ECN NO.	YYting	Robing

GENERAL TOLERANCE	
.X	±0.30
.XX	±0.20
.XXX	±0.10
X.°	±2°
PROJECT	

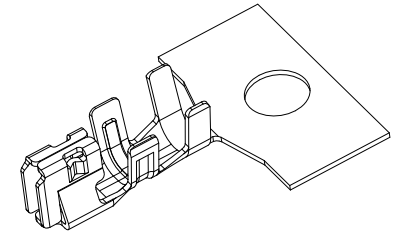
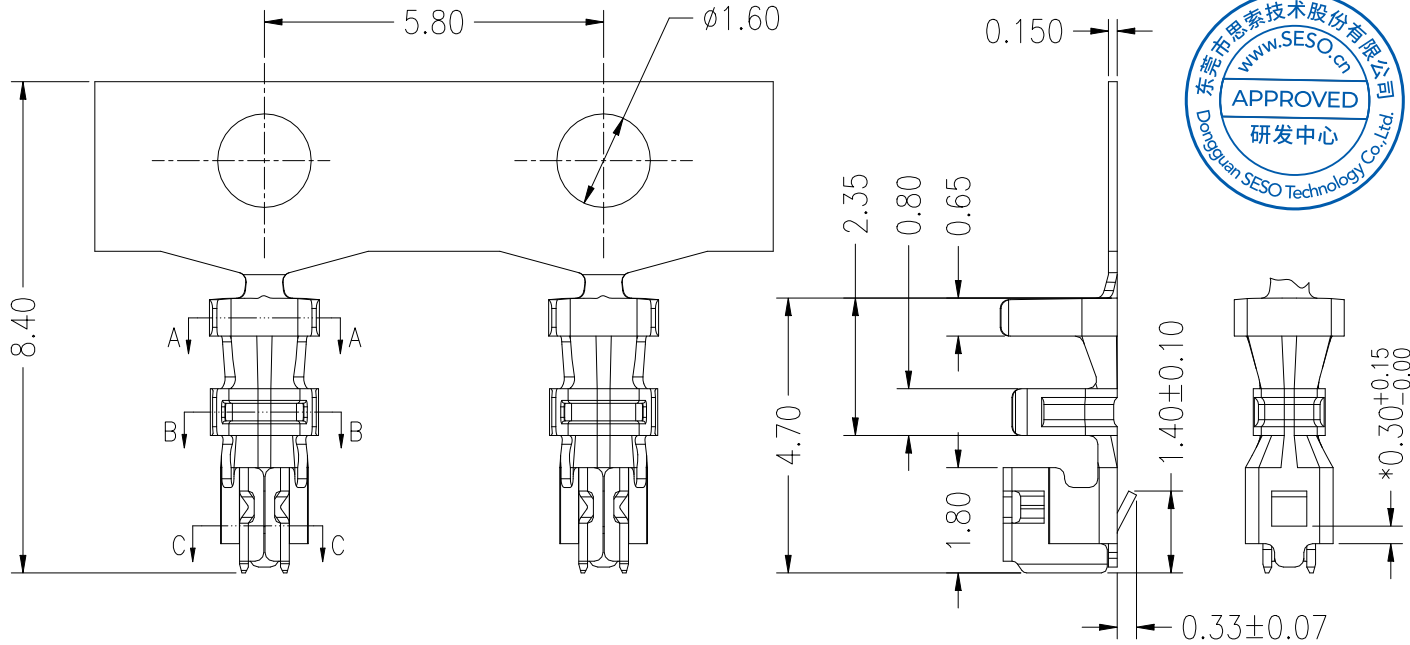
SMS 东莞市思索技术股份有限公司
 Dongguan SESO Technology Co.,Ltd.

APPROVAL	CHECK	DRAWN	DATE
Larry	Jane	Alan	2012/02/25

PART NO.				
3535H-XX-N0-XX				
TITLE				
2.00mm Crimp Style Connectors				
UNIT	SCALE	SHEET	REV	NUMBER
mm	1:1	1/1	J1	CD

RoHS

This products can apply to the SESO Doc NO. QA-3-04-005 of Environmental&Material Management Rules

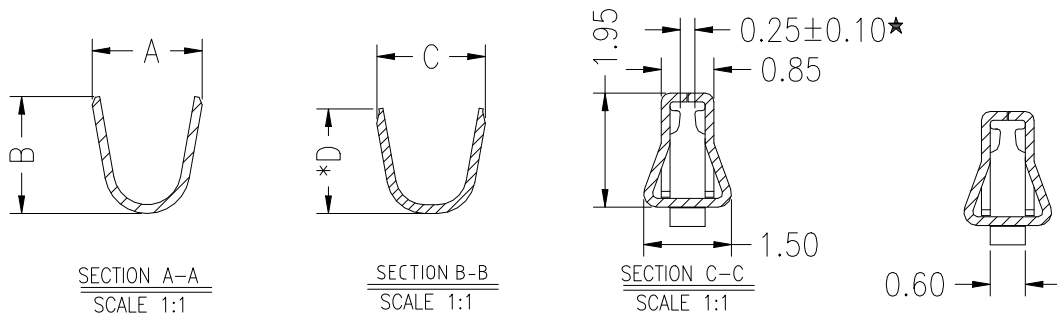


Specifications :

- Voltage rating: 125V AC / DC
- Current rating: 2A AC / DC
- Withstanding voltage: 1000V AC/minute
- Temperature range: -40°C~+105°C
- Insulation resistance: ≥1000MΩ
- Contact resistance: <20mΩ
- After environmental testing: <30mΩ
- Material(Pin): Phosphor bronze
- Mates With SWB Housing: 3535H
- "★" Critical dimension

3535 T X - P SN X - X
 ① ② ③ ④ ⑤ ⑥ ⑦

- ① Series Number
- ② Category: T-terminal
- ③ Shape: Blank-ordinary ; H-High Crimp
- ④ Material: P-Phosphor bronze
- ⑤ Plating Code: SN-Bright tin plating
- ⑥ Plating method: Blank-Stamping before plating
- ⑦ Mold No./Mark/Special No. :



3535T-PSN	1.88	2.00	1.23	1.33	AWG#24~26 (0.22~0.13mm ²)	1.00~1.40mm
3535TH-PSN	1.88	2.00	1.85	1.80	AWG#20~22 (0.5~0.35mm ²)	1.30~1.45mm
PART NO	Dim A	Dim B	Dim C	Dim D	Wire Size	Insulation O.D.

2021/1/28	F	ER20210126002	Increase The Size Control	YYting	Robing
2020/6/16	E	ER20200522001	Change skid stop	YYting	Robing
DATE	REV	ECN NO.	DESCRIPTION	MODIFY	APPROVAL

GENERAL TOLERANCE
 .X ±0.30
 .XX ±0.20
 .XXX±0.10
 X.' ±Z'

PROJECT

SMS 东莞市思索技术股份有限公司
 Dongguan SESO Technology Co.,Ltd.

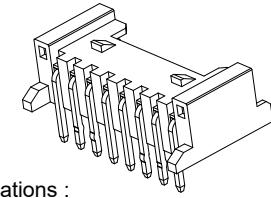
PART NO. 3535TX-PSN					
TITLE 2.00mm Crimp Style Connectors					
UNIT	SCALE	SHEET	REV	NUMBER	
mm	1:1	1/1	F	CD	

A

A

RoHS

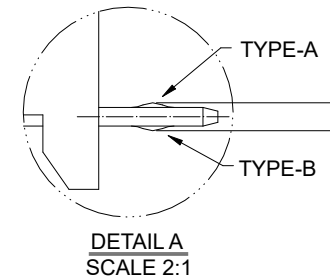
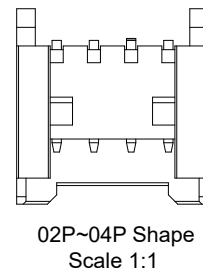
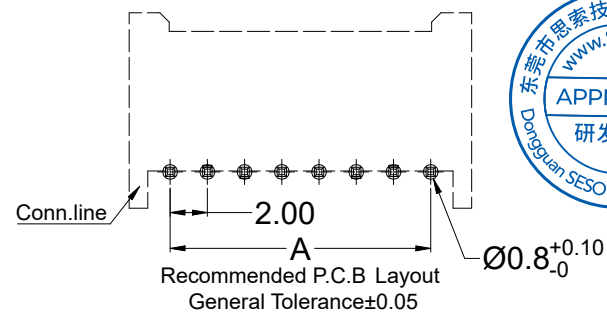
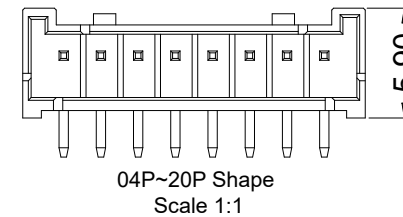
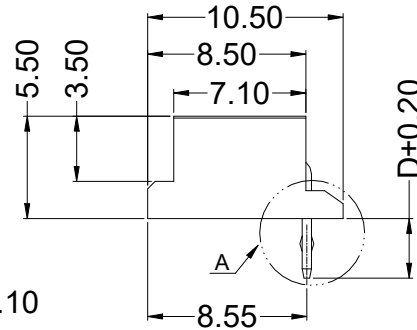
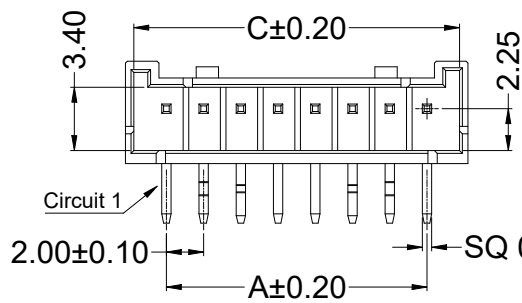
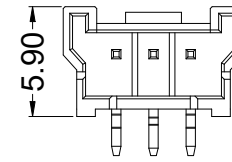
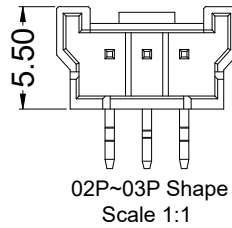
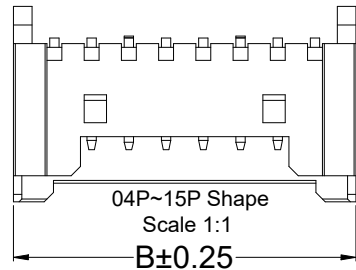
This products can apply to the SESO Doc NO. QA-3-04-005 of Environmental&Material Management Rules



- Specifications :
- Voltage rating: 125V AC / DC
 - Current rating: 2A AC / DC
 - Withstanding voltage: 1000V AC/minute
 - Temperature range: -40°C~+105°C
 - Insulation resistance: ≥1000MΩ
 - Contact resistance: ≤20mΩ
 - After environmental testing: ≤30mΩ
 - Material(Pin): Brass
 - Mates With SWB Housing: 3535H

3535 W R X - XX XX - XX XX XX - X
 ① ② ③ ④ ⑤ ⑥ ⑦ ⑧ ⑨ ⑩

- ① Series No.
- ② Category: W-WAFER
- ③ Welding Board Angle: R-Right Angle 90°
- ④ Welding Way: Blank-DIP
- ⑤ Row No.-Pin No.: XX-02P~20P
- ⑥ Plug the Pin & Special No.:
 A- DIP=3.20mm,With Kink
 B-DIP=2.50mm,With Kink
 C-DIP=2.10mm,Without Kink
 C1- DIP=2.10mm,Without Kink, With Stand off
 D-DIP=3.00mm,With Kink
- ⑦ Material: N0 -PA66 UL 94V-0
 9T -PA9T UL 94V-0
- ⑧ Plating Category: SN-Bright Tin Plating
 SW-Matte Tin Plating
- ⑨ Color : Blank-Natural Color
- ⑩ 1- Flow code ~~~~~



Dim"D"	
TYPE	Dimensions (mm)
A	3.20mm,With Kink
B	2.50mm,With Kink
C	2.10mm,Without Kink
C1	2.10mm,Without Kink, With Stand off
D	3.00mm,With Kink

With Kink to Choose the type(A Or B)

PIN No PoLes	TYPE										
	1	2	3	4	5	6	N-2	N-1	N		
6 PIN Over	-	A	B	-	-	-	B	A	-		
6 Pin	-	A	B	B	A	-					
5 Pin	A	B	-	B	A						
4 Pin	A	B	B	A							
3 Pin	A	B	A								
2 Pin	A	B									

Poles	Dimensions (mm)			Poles	Dimensions (mm)		
	A	B	C		A	B	C
02	2.00	7.70	6.90	09	16.20	20.50	19.60
03	4.00	9.70	8.90	10	18.20	22.50	21.60
04	6.00	10.30	9.30	11	20.20	24.60	23.60
05	8.00	12.30	11.30	12	22.20	26.60	25.70
06	10.00	14.30	13.30	13	24.20	28.70	27.70
07	12.10	16.40	15.50	14	26.20	30.70	29.70
08	14.10	18.40	17.50	15	28.30	32.80	31.60

A

DATE	REV	ECN NO.	DESCRIPTION	MODIFY	APPROVAL	PROJECT
2020.3.30	J	EN20180306001	Update Drawing Frame	YYting	Robing	

GENERAL TOLERANCE	
.X	±0.30
.XX	±0.20
.XXX	±0.10
X.°	±2°

SMS 东莞市思索技术股份有限公司
 Dongguan SESO Technology Co.,Ltd.

APPROVAL	CHECK	DRAWN	DATE
Robing	YYting	Alan	2013/05/16

PART NO.				
3535WR-XXXX-XXXX-X				
TITLE				
2.00mm Crimp Style Connectors				
UNIT	SCALE	SHEET	REV	NUMBER
mm	1:1	1/1	J	CD

1 | 2 | 3 | 4 | 5 | 6 | 7 | 8

RoHS

This products can apply to the SESO Doc NO. QA-3-04-005 of Environmental&Material Management Rules

- Specifications :
- Voltage rating: 125V AC / DC
 - Current rating: 2A AC / DC
 - Withstanding voltage: 1000V AC/minute
 - Temperature range: -40°C~+105°C
 - Insulation resistance: ≥1000MΩ
 - Contact resistance: ≤20mΩ
 - After environmental testing: ≤30mΩ
 - Material(Pin): Brass
 - Mates With SWB Housing: 3535H

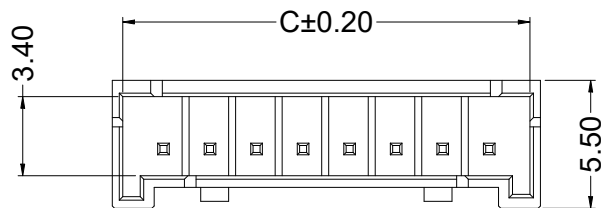
3535 W V X - XX X - N0 SN XX
 ① ② ③ ④ ⑤ ⑥ ⑦ ⑧ ⑨

- ① Series No.
- ② Category: W-WAFER
- ③ Welding Board Angle: V-Straight 180°
- ④ Welding Way: Blank-DIP
- ⑤ Row No.-Pin No.: XX-02P~20P
- ⑥ Plug the Pin & Special No.:
- ⑦ Material: N0 -PA66 UL 94V-0
- ⑧ Plating Category: SN-Bright Tin Plating
- ⑨ Color : Blank-Natural Color

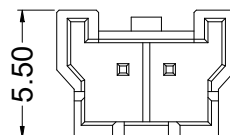
With K to Choose the type(A Or B)

PoLes	PIN No TYPE	PIN No						N-2	N-1	N
		1	2	3	4	5	6			
6 PIN Over	-	A	B	-	-	-	-	B	A	-
6 PIN	-	A	B	B	A	-	-	-	-	-
5 PIN	A	B	-	B	A	-	-	-	-	-
4 PIN	A	B	B	A	-	-	-	-	-	-
3 PIN	A	B	A	-	-	-	-	-	-	-
2 PIN	A	B	-	-	-	-	-	-	-	-

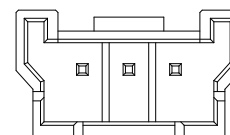
Poles	Dimensions (mm)			Poles	Dimensions (mm)		
	A	B	C		A	B	C
02	2.00	7.70	5.30	09	16.20	20.50	19.60
03	4.00	9.70	7.30	10	18.20	22.50	21.60
04	6.00	10.30	9.30	11	20.20	24.60	23.60
05	8.00	12.30	11.30	12	22.20	26.60	25.70
06	10.00	14.30	13.30	13	24.20	28.70	27.70
07	12.10	16.40	15.50	14	26.20	30.70	29.70
08	14.10	18.40	17.50	15	28.30	32.80	31.60



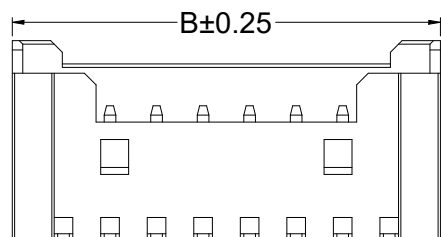
04P~15P Shape
Scale 1:1



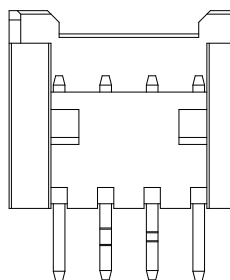
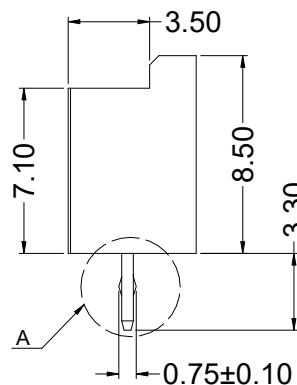
02P Shape
Scale 1:1



03P Shape
Scale 1:1

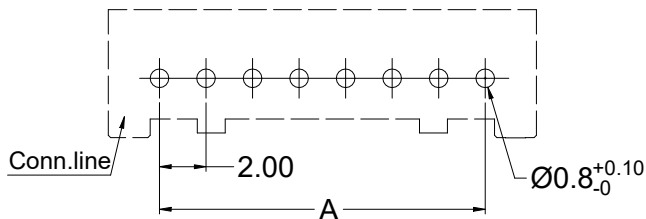


Circuit 1

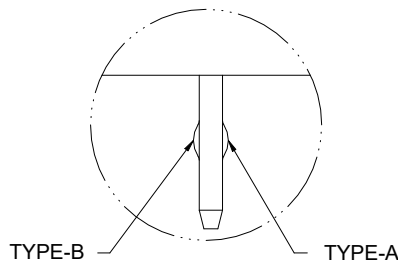


02P~04P Shape

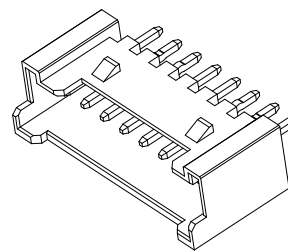
★ 2.000
A±0.20
SQ 0.50±0.10



Recommended P.C.B Layout
General Tolerance±0.05



DETAIL A
SCALE 2:1



A

DATE	REV	ECN NO.	DESCRIPTION	MODIFY	APPROVAL	PROJECT
2022.9.26	J1	/	ADD "Circuit 1" Identification	Jane	Larry	GENERAL TOLERANCE .X ±0.30 .XX ±0.20 .XXX ±0.10 X.° ±2°
2020.3.30	J	EN20180306001	Update Drawing Frame	YYting	Robing	APPROVAL

SMS 东莞市思索技术股份有限公司
Dongguan SESO Technology Co.,Ltd.

PART NO.				
3535WV-XX-N0SN				
TITLE				
2.00mm Crimp Style Connectors				
UNIT	SCALE	SHEET	REV	NUMBER
mm	1:1	1/1	J1	CD

APPROVAL	CHECK	DRAWN	DATE
Larry	Jane	Alan	2013/05/16