

RoHS

This products can apply to the SWB Doc NO. QA-3-04-005 of Environmental&Material Management Rules

■ Specifications :

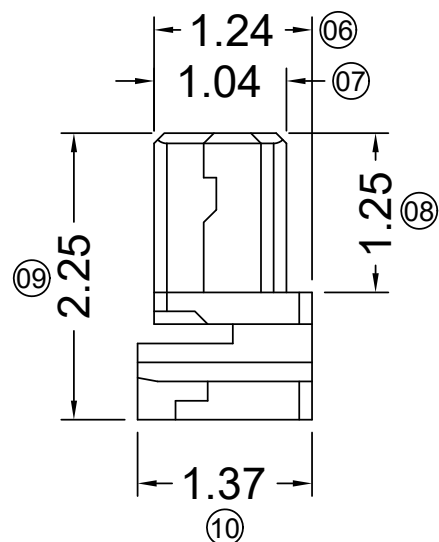
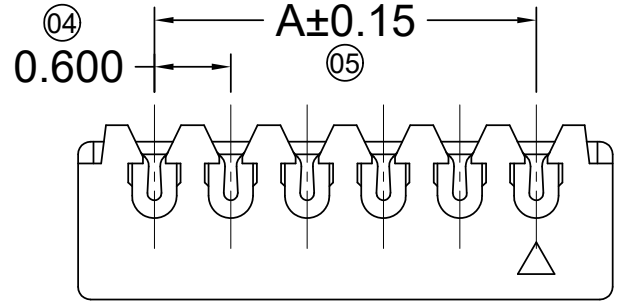
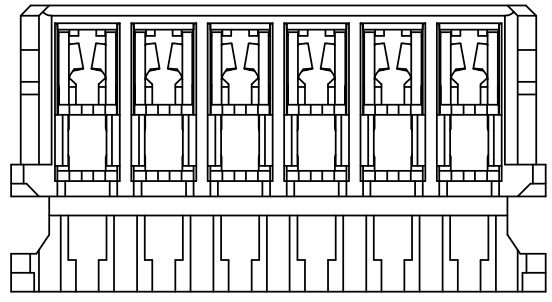
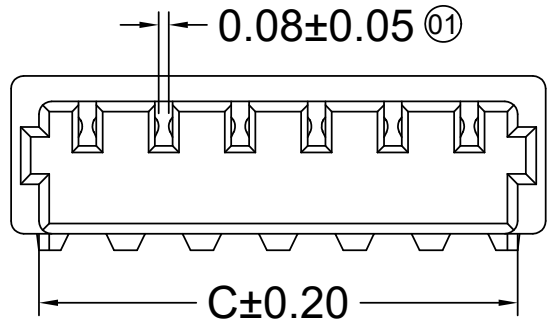
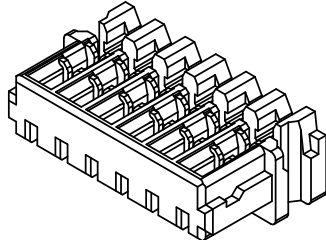
- Voltage rating: 30V AC / DC
- Current rating: 0.2A AC / DC
- Withstanding voltage: 200V AC/minute
- Temperature range: -25°C~+85°C
- Insulation resistance:≥100MΩ
- Contact resistance: ≤30mΩ
- After environmental testing: ≤40mΩ
- Material(Terminal):Phosphor Bronze
- Wire Range:AWG#36/AWG#34
- Insulation O.D.:0.32mm(Max)
- Mates With SWB Wafer: 0600W

0600 H I - XX X - LP XX HF

① ②③ ④ ⑤ ⑥ ⑦ ⑧

- ① Series No.
- ② Category: H-HSG
- ③ Welding Board Angle: I-HSG+hardware
- ④ Row No.-Pin No.: XX-Single row
- ⑤ Plating style: Blank-Tin plating; G-Gold Flash G03-Gold 3u"
- ⑥ Material: LP-LCP 94V-0
- ⑦ Color: Blank-Natural color Black
- ⑧ HF-Halogen free

Poles	Dimensions(mm)			Poles	Dimensions(mm)		
	A	B	C		A	B	C
02	0.60	1.80	1.35	12	6.60	7.80	7.35
03	1.20	2.40	1.95	13	7.20	8.40	7.95
04	1.80	3.00	2.55	14	7.80	9.00	8.55
05	2.40	3.60	3.15	15	8.40	9.60	9.15
06	3.00	4.20	3.75	16	9.00	10.20	9.75
07	3.60	4.80	4.35	17	9.60	10.80	10.35
08	4.20	5.40	4.95	18	10.20	11.40	10.95
09	4.80	6.00	5.55	19	10.80	12.00	11.55
10	5.40	6.60	6.15	20	11.40	12.60	12.15
11	6.00	7.20	6.75	22	12.60	13.20	12.75



DATE	REV	ECN NO.	DESCRIPTION	MODIFY	APPROVAL	PROJECT
2020.8.26	B	EN20200318002	Update Drawing Frame	YYting	Robing	Robing

GENERAL TOLERANCE

.X	±0.30
.XX	±0.20
.XXX	±0.10
X.°	±2°

APPROVAL: Robing, YYting, Allen

CHECK: Robing, YYting, Allen

DRAWN: Allen

DATE: 2013/07/31

PART NO. 0600HI-XXX-LPHF

TITLE 0.60mm IDC Style Connectors

UNIT	SCALE	SHEET	REV	NUMBER
mm	1:1	1/1	B	A-198

F  
E  
D  
C  
B  
A

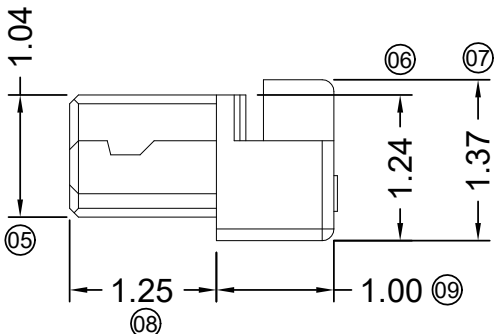
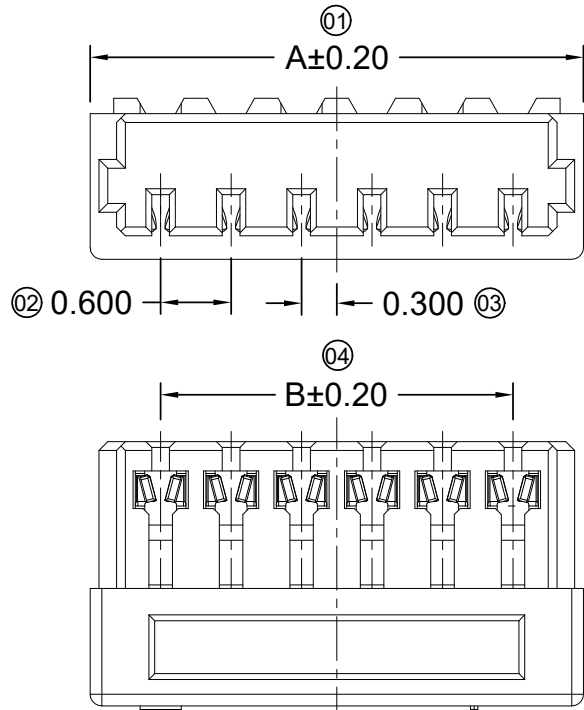
F  
E  
D  
C  
B  
A

1 2 3 4 5 6 7 8

1 2 3 4 5 6 7 8

RoHS

This products can apply to the SWB Doc NO. QA-3-04-005 of Environmental&Material Management Rules



- Specifications :
- Voltage rating: 30V AC / DC
  - Current rating: 0.2A AC / DC
  - Withstanding voltage: 200V AC/minute
  - Temperature range: -25°C~+85°C
  - Insulation resistance: ≥100MΩ
  - Contact resistance: ≤30mΩ
  - After environmental testing: ≤40mΩ

0600 HI - XX G - LP XX  
① ②③ ④ ⑤ ⑥ ⑦

- ① Series No.
- ② Category: H-HSG
- ③ Welding Board Angle: I-HSG+hardware
- ④ Row No.-Pin No.: XX-Single row
- ⑤ Plating style: Blank-Tin plating; G-Gold Flash G03-Gold 3u"
- ⑥ Material: LP-LCP 94V-0 N0-PA66 94V-0
- ⑦ Color: Blank-Natural color Black HF-Halogen free

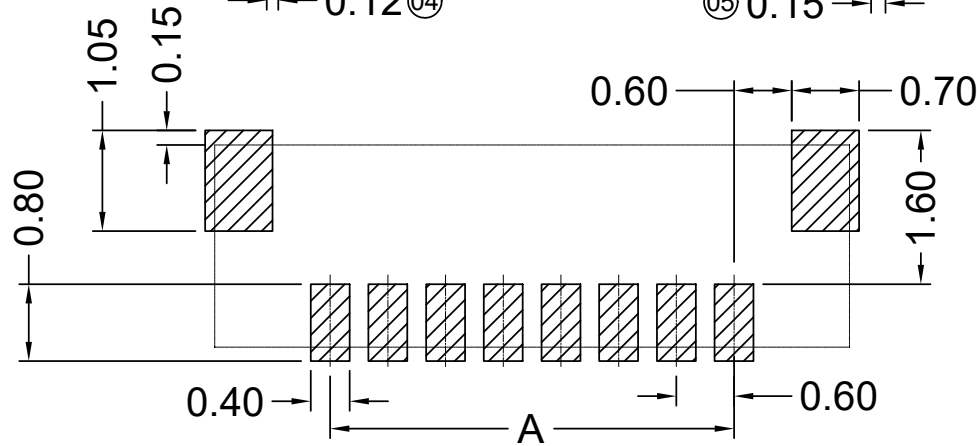
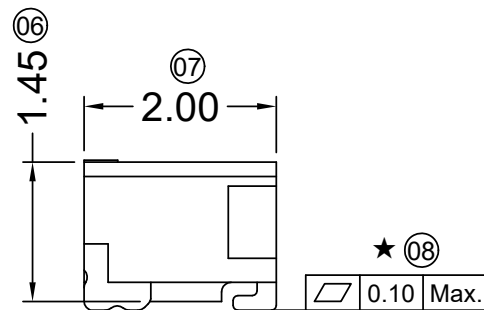
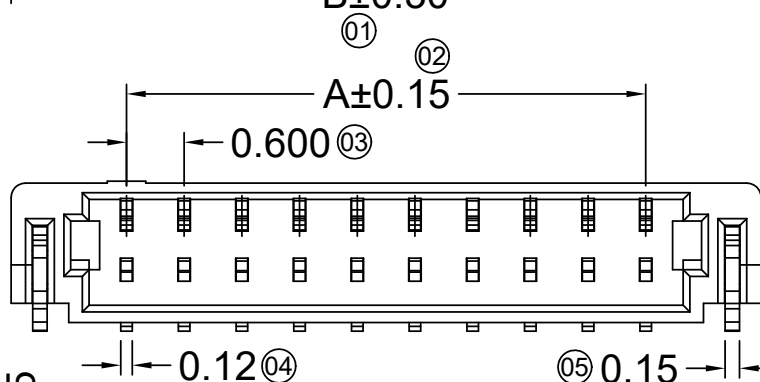
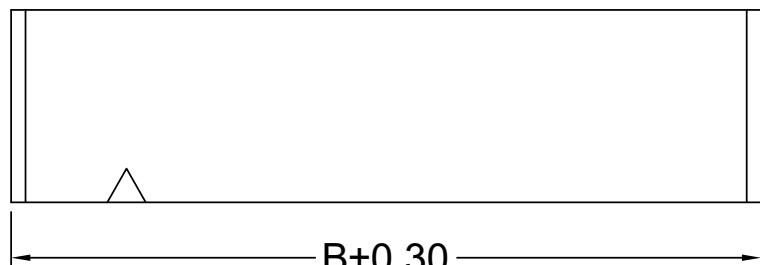
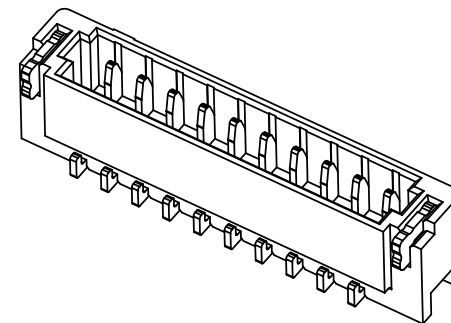
0600HI-XXG3-LPHF	LCP UL 94V-0 Halogen Free	AWG#36	0.29mm(Max)	Phosphor Bronze	Gold-Flash	0600W	1,000Pcs
0600HI-XX-N0HF	PA66 UL 94V-0 Halogen Free				Tin-Plated		
0600HI-XXG-N0HF	PA66 UL 94V-0 Halogen Free				Gold-Flash		
0600HI-XX-LP	LCP UL 94V-0				Tin-Plated		
0600HI-XXG-LP					Gold-Flash		
PART NO	Material				Wire Range		

Poles	Dimensions(mm)		Poles	Dimensions(mm)	
	A	B		A	B
02	1.80	0.60	13	8.40	7.20
03	2.40	1.20	14	9.00	7.80
04	3.00	1.80	15	9.60	8.40
05	3.60	2.40	16	10.20	9.00
06	4.20	3.00	17	10.80	9.60
07	4.80	3.60	18	11.40	10.20
08	5.40	4.20	19	12.00	10.80
09	6.00	4.80	20	12.60	11.40
10	6.60	5.40	21	13.20	12.00
11	7.20	6.00	22	13.80	12.60
12	7.80	6.60			

					GENERAL TOLERANCE .X ±0.30 .XX ±0.20 .XXX ±0.10 X.° ±2°				东莞市思索连接器有限公司 SWB CONNECTORS CO.,LTD				PART NO. 0600HI-XXG-LP TITLE 0.60mm IDC Style Connectors				
					APPROVAL				CHECK	DRAWN	DATE						
DATE	REV	ECN NO.	DESCRIPTION	MODIFY	APPROVAL	PROJECT				Robing	YYting	Allen	2013/07/31				
													UNIT	SCALE	SHEET	REV	NUMBER
													mm	1:1	1/1	A	A-198

RoHS

This products can apply to the SWB Doc NO. QA-3-04-005 of Environmental&Material Management Rules



Recommended P.C.B Layout  
General Tolerance±0.05

- Specifications :
- Voltage rating: 30V AC / DC
  - Current rating: 0.2A AC / DC
  - Withstanding voltage: 200V AC/minute
  - Temperature range: -25°C~+85°C
  - Insulation resistance: ≥100MΩ
  - Contact resistance: ≤30mΩ
  - After environmental testing: ≤50mΩ
  - Material(Pin): Phosphor Bronze
  - Material(Solder Tabs): Brass
  - Finish( Solder Tabs): Matte Tin
  - Mates With SWB Housing: 0600HI



0600 W R S - XX HF - XX XX XX  
① ②③④ ⑤ ⑥ ⑦ ⑧ ⑨

- ① Series No.
- ② Category: W-wafer
- ③ Welding Board Angle: R-90°
- ④ Welding Way: S-SMT
- ⑤ Row No.-Pin No. :XX-Single row
- ⑥ Special NO.: HF-Halogen Free
- ⑦ Material: LP-LCP 94V-0
- ⑧ Planting Category: V01-All Gold Flash
- ⑨ Color: Blank-Black color

					GENERAL TOLERANCE .X ±0.30 .XX ±0.20 .XXX ±0.10 X.° ±2°				东莞市思索连接器有限公司 SWB CONNECTORS CO.,LTD				PART NO. 0600WRS-XXHF-LPV01								
					APPROVAL Robing				CHECK YYting				DRAWN Allen				DATE 2019/09/18				
PROJECT Robing					DATE 2019/09/18					UNIT mm	SCALE 1:1	SHEET 1/1	REV B	NUMBER A-172							
2020.8.26	B	EN20200318002	Update Drawing Frame	YYting	Robing																
DATE	REV	ECN NO.	DESCRIPTION	MODIFY	APPROVAL																